

Deity Connect Interview Kit 2.4G Wireless Audio System

Product Manual

English

Foreword

Thank you for purchasing the Deity Connect Interview Kit.

Instructions

- Please read this product manual carefully.
- Keep this product manual. Always include this product manual when passing the products on to third parties.
- Heed all warnings and follow all instructions in this product manual.

- WARNING:** Do not place the product near any corrosive chemicals. Corrosion may cause the product to malfunction.
- Only use a microfibre or dry cloth to clean the product.
 - Operate carefully to not cause any damage by dropping or physical shocking it.
 - Keep all liquids away from the product. Liquids entering the product can short-circuit the electronics or damage the mechanics.
 - Keep storing the product in a dry, clean, dust-free environment.
 - Please have the product checked by the authorized service or agent if your product has some problems. Please note that this warranty does not apply to repair arising out of the malfunction of unauthorized disassembly, although you may request such repairs on a chargeable basis.
 - The product is certified by RoHS, CE, FCC, KCC and Japan MIC. Please operate the product in compliance with the operation standards. Please note that this warranty does not apply to repair arising out of the misuse, although you may request such repairs on a chargeable basis.
 - The instructions and information in this manual are based on thorough, controlled company testing procedures. Further notice will not be given if the design and specifications change.

FCC Compliance Statement

This device complies with Part 15 of the FCC Rules. Operation is subject to the following two conditions:

(1) This device may not cause harmful interference, and (2) This device must accept any interference received, including interference that may cause undesired operation.

Warning: Changes or modifications not expressly approved by the party responsible for compliance could void the user's authority to operate the equipment.

NOTE: This equipment has been tested and found to comply with the limits for a Class B digital device, pursuant to Part 15 of the FCC Rules. These limits are designed to provide reasonable protection against harmful interference in a residential installation. This equipment generates uses and can radiate radio frequency energy and, if not installed and used in accordance with the instructions, may cause harmful interference to radio communications. However, there is no guarantee that interference will not occur in a particular installation. If this equipment does cause harmful interference to radio or television reception, which can be determined by turning the equipment off and on, the user is encouraged to try to correct the interference by one or more of the following measures:

-1-

Functions and Operations

1. On/Off /Back Button

Long press or to turn the Transmitter or Receiver on and off. It also functions as a "back" button while navigating the various menus and setup screens to return to the previous screen or menu item.

2. MENU/SEL Button

This button is used to enter the menu and select highlighted items.

3. Up/Down Button

The Up and Down buttons are used to select various options and adjust values in the setup screens.

* When the screen is locked, press the Up and Down buttons (3 seconds) simultaneously to unlock the screen.

4. Language Setting

Enter the "LANGUAGE" option in the menu to select the language (system default English).

5. User ID Setting

Enter the "USER ID" option in the menu to set the Transmitter's User ID to identify different Transmitters.

6. Pair Setting

Enter the "PAIR" option in the Transmitter and Receiver menu respectively, select "YES" to pair. The Transmitter and Receiver will automatically finish the pairing within 15 seconds, and the Pair LEDs flash green to indicate pairing, the green LEDs are always on to indicate that the pair is successful, and the green LEDs flash slowly to indicate that the pair is unsuccessful.

7. Auto-lock Setting

Enter the "AUTO-LOCK" option in the menu, you can set the lock screen time (system default 15s), there are nine options: never, 5s, 10s, 15s, 20s, 1min, 2min, 5min, 10min.

* When the screen is locked, the buttons do not function. This helps to prevent settings from changing during operation. To unlock the screen, press the Up and Down buttons simultaneously for 3 seconds.

-9-

Reorient or relocate the receiving antenna.
Increase the separation between the equipment and receiver.
Connect the equipment into an outlet on a circuit different from that to which the receiver is connected.
Consult the dealer or an experienced radio/TV technician for help.

RF warning statement:

The device has been evaluated to meet general RF exposure requirement. The device can be used in portable exposure condition without restriction.

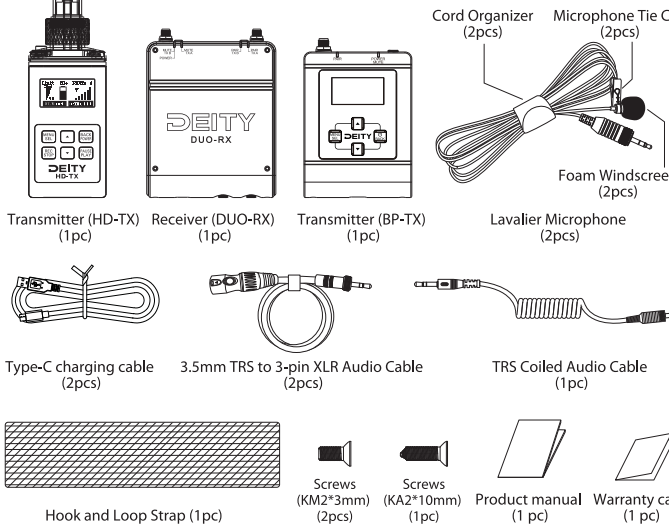
Intended Use

Intended use of the Deity Connect Interview Kit includes:

- The user has read the instructions of this manual.
- The user is using the products within the operating conditions and limitations described in this product manual.
- "Improper use" means using the products other than as described in these instructions or under operating conditions which differ from those described herein.

Item check list

Package includes the following items:



-1-

14. Freq Boost Setting

Enter the "FREQ BOOST" option in the Transmitter menu, users can make the high frequency boost (boost audio frequencies 7kHz-20kHz) as needed, the boost range is from 1dB to 10dB in 1dB steps.

15. RF Power Setting

Enter the " RF POWER " option in the Transmitter menu, users can select the RF power (5 RF outputs: 10mw, 25mw, 50mw, 100mw, AUTO) according to the actual recording conditions. Users can optimize the Transmitter for maximum battery life or maximum operating range.

16. Firmware Update

Users can update firmware via U disk (exFat/FAT32 USB flash drive). When updating the firmware, please download the latest firmware to the root directory of U disk on the official website, then use the "USB-C to USB-A Firmware Update Adapter" to connect the U disk to the USB Type-C input port, select "UPDATE" option from the menu, and update the firmware following the on-screen instructions. After the firmware update is completed, the firmware version shows the latest version. Official website : <https://www.deitymic.com>

* Transmitter (HD-TX) also supports firmware update via built-in MicroSD card.

17. System Reset

Enter the "SYS RESET" option in the menu to reset the system and restore the default settings.

18. Out Level Setting

Enter the "OUT LEVEL " option in the Receiver menu to adjust the output gain of the RX output A and B as needed. The adjustment range is from -51dB to +15dB in 3dB steps.

19. TX Sleep Setting

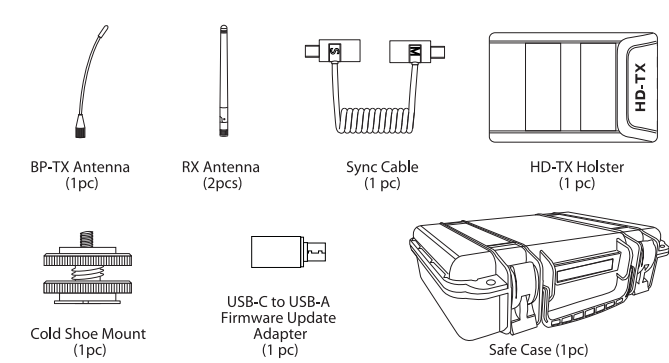
In the Receiver menu, the TX-A and TX-B Transmitters can be individually set to sleep. When the sleep is turned on, the Transmitter enters a low power mode (lock screen, powers down the audio input circuitry, but keeps on a low power data stream to maintain a link).

* After the Transmitters and Receiver are successfully paired, users can remote control every audio adjustment on the each Transmitter through the Receiver.

20. Volume Adjustment Setting

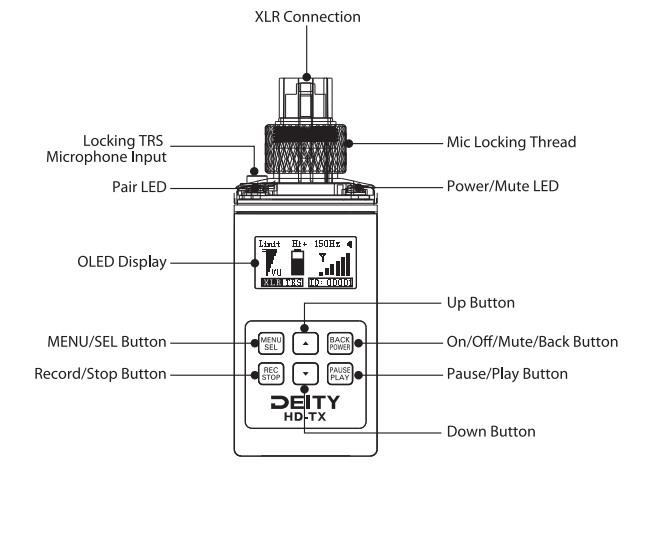
Enter the "VOLUME " option in the Transmitter(HD-TX) menu to adjust the monitor volume as needed. The adjustment range is from -24dB to +24dB in 1dB steps.

-11-

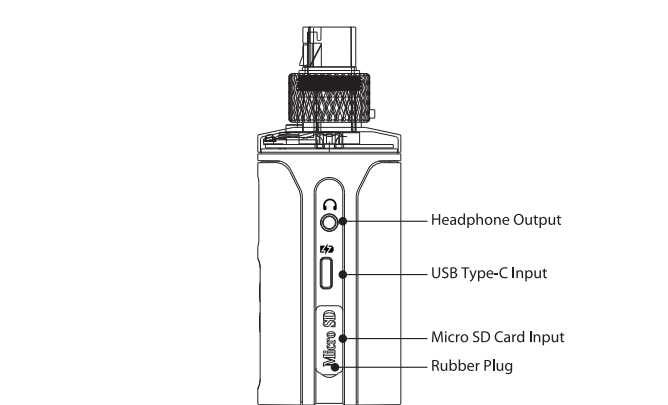


Nomenclature

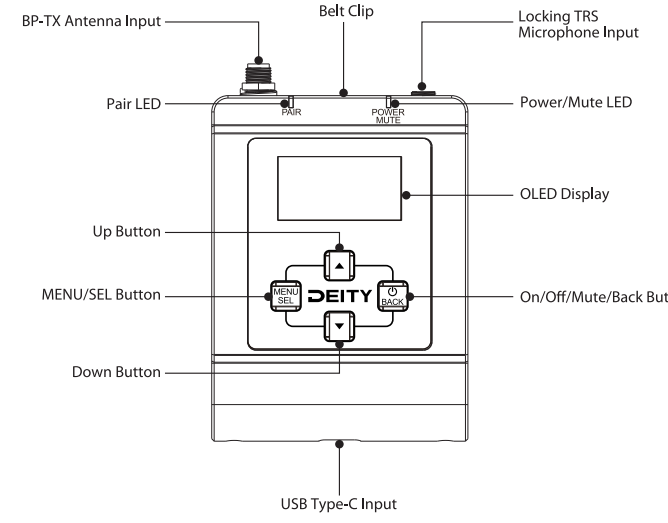
1. Transmitter (HD-TX)



-3-

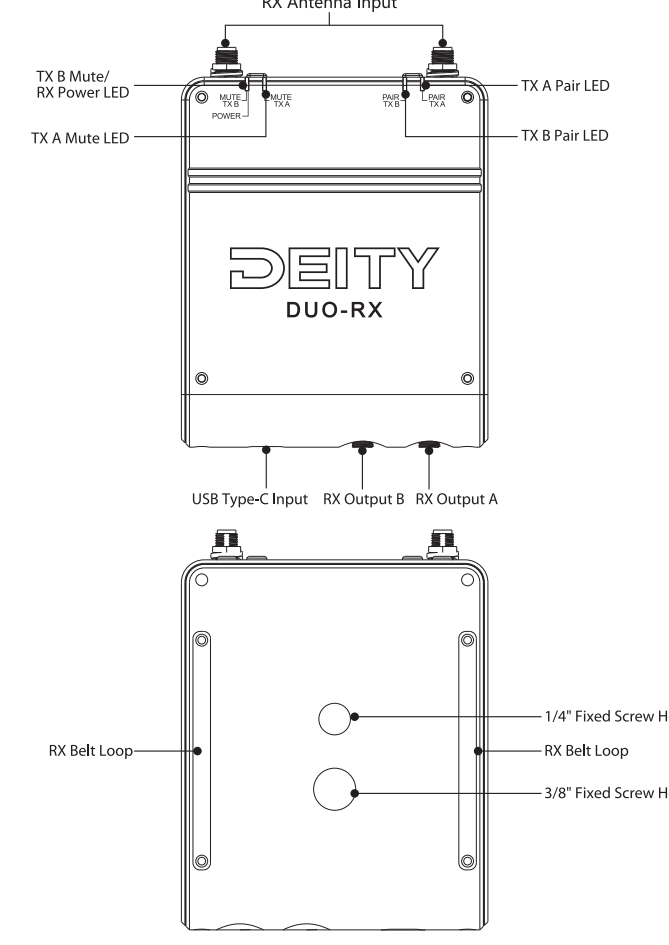


2. Transmitter (BP-TX)



-4-

3. Receiver (DUO-RX)



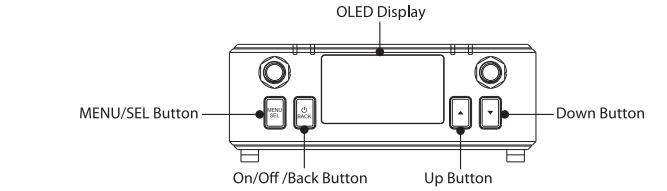
-5-

Specifications

| Transmitter(HD-TX) | |
|-------------------------------|---|
| Transmission Type | 2.4GHz |
| Antenna Input | Internal |
| Mute Switch | Yes |
| Range (distance) | Up To 100m |
| Transmitting Bitrate/Sampling | 24bit/48kHz |
| Recording Bitrate/Sampling | 24bit/48kHz |
| Limiters | Analog |
| Low Cut | 20Hz to 200 Hz in 10Hz steps |
| High Frequency Boost | 7KHz-20KHz Boost @ +1dB Steps |
| Display Type | 1.3" OLED Display |
| Battery Type | Lithium-Ion Rechargeable Battery |
| Battery Capacity | 2700mAh |
| Battery Working Time | ~10 Hrs @100mw RF Output |
| Battery Recharge Time | <90 minutes via USB QuickCharge 2.0/3.0 |
| Battery Charger | USB Type-C Charging Cable |
| Audio Input Connector | 3-Pin XLR, Female Locking 3.5mm TRS |
| Audio Retransmission Modes | Low 19ms/ Medium 30ms/ High 40ms |
| Transmitting Power | 10mW/25mW/50mW/100mW/AUTO |
| Input Gain Range | -12dB to +36dB in 3dB Steps |
| Input Frequency Response | 20Hz~20KHz |
| Audio Output Connectors | Stereo TRS |
| Output Power | 48V via XLR, +3V Plugin Power via TRS |
| File Sizes | 1Hr ~1Gb |
| Dimensions | 42.5mm*42.5mm*112.3mm |
| Net Weight | 220g |
| Temperature Range | -10 °C to +45 °C |

* Run times vary based on RF Output, if Phantom Power turned on, and if the unit is recording to the micro SD card. Your battery life may vary. Reducing the RF Output will increase the battery life.

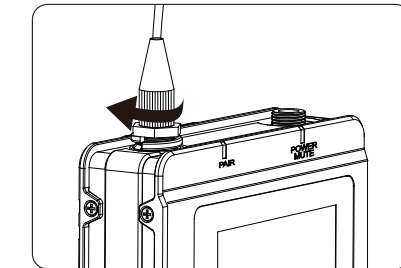
-14-



Installations and Use

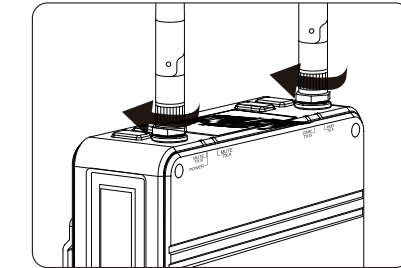
1. Antenna Installation

1). BP-TX Antenna Installation



* When installed, the BP-TX antenna is away from the human body (belt clip), which helps to improve the transmission distance.

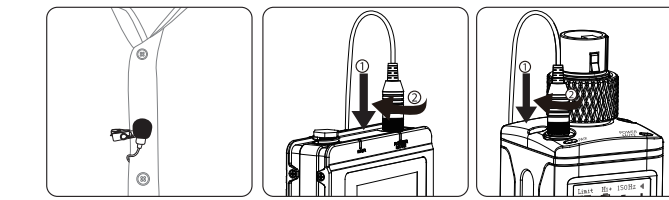
2). RX Antenna Installation



-6-

2. Lavalier Microphone Installation

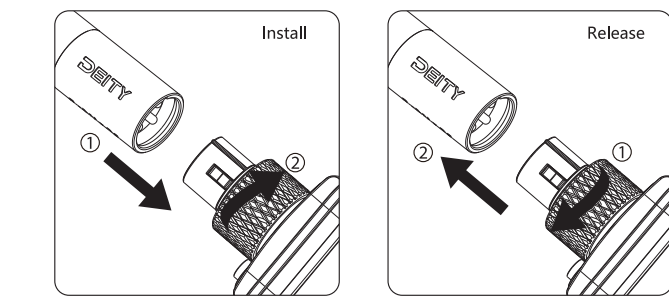
Simply clip the Lavalier Microphone onto your clothes and screw it into the transmitter microphone input.



3. 3-pin XLR Microphone Installation

The HD-TX also accepts 3-pin XLR mic connection, and 48V Phantom Power is supplied.

* When connecting a mic via XLR always lock the mic to the HD-TX using the mic locking thread.

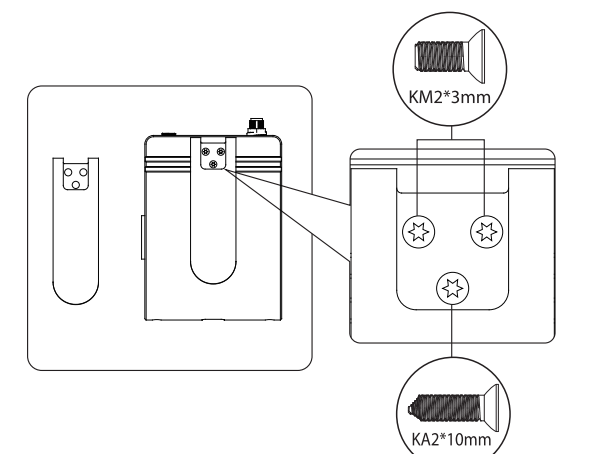


-7-

4. Use of The Transmitter (BP-TX) Belt Clip

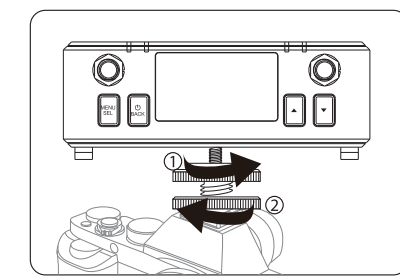
The Transmitter(BP-TX) can be attached to the user's belt or clothing via the included belt clip.

* If the belt clip is removed, the user can also install it with the supplied screws.



5. Receiver Installation

The Receiver (DUO-RX) can be installed in a sound bag using the Hook and Loop Strap, or it can be mounted to the camera with the equipped Cold Shoe Mount.



-8-

| Receiver | |
|----------------------------|---|
| Transmission Type | 2.4GHz |
| Antenna Input | SMA Female Connector |
| Antenna Array | Dual True Diversity |
| Range (distance) | Up To 100m |
| Bitrate/Sampling Frequency | 24bit/48kHz |
| Display Type | 1.3" OLED Display |
| Battery Type | Lithium-Ion Rechargeable Battery |
| Battery Capacity | 2200mAh |
| Battery Working Time | ~10 Hrs @100mw RF Output |
| Battery Recharge Time | ~70 Minutes via USB QuickCharge 2.0/3.0 |
| Battery Charger | USB Type-C Charging Cable |
| Audio Output Connectors | Dual Female Locking 3.5mm TRS |
| Audio Retransmission Modes | Low 19ms/ Medium 30ms/ High 40ms |
| Mounting Option | Cold Shoe Mount & Hook and Loop Strap |
| Dimensions | 115mm*87.4mm*33.5mm |
| Net Weight | 248g |
| Temperature Range | -10 °C to +45 °C |



-16-

| Lavalier Microphone | |
|---------------------|--------------------------------------|
| Polar Pattern | Omni-directional |
| Frequency Range | 50Hz~20kHz |
| Maximum SPL | 110dB@1KHz, 1% THD into 1KΩ |
| THD | ≤0.5% |
| Output Impedance | 2.2KΩ |
| Sensitivity | -40±2dB re 1V/Pa @1kHz |
| Signal/Noise | ≥67dB SPL(@1KHz, rel 1Pa per IEC651) |

Trademarks

Qualcomm is trademark or registered trademark of Qualcomm in China or other countries. All other corporate and product names and trademarks mentioned in this manual are the property of their respective owners.

Detailed product manual for Deity Connect Interview Kit can be found on www.deitymic.com

-17-